

D

E

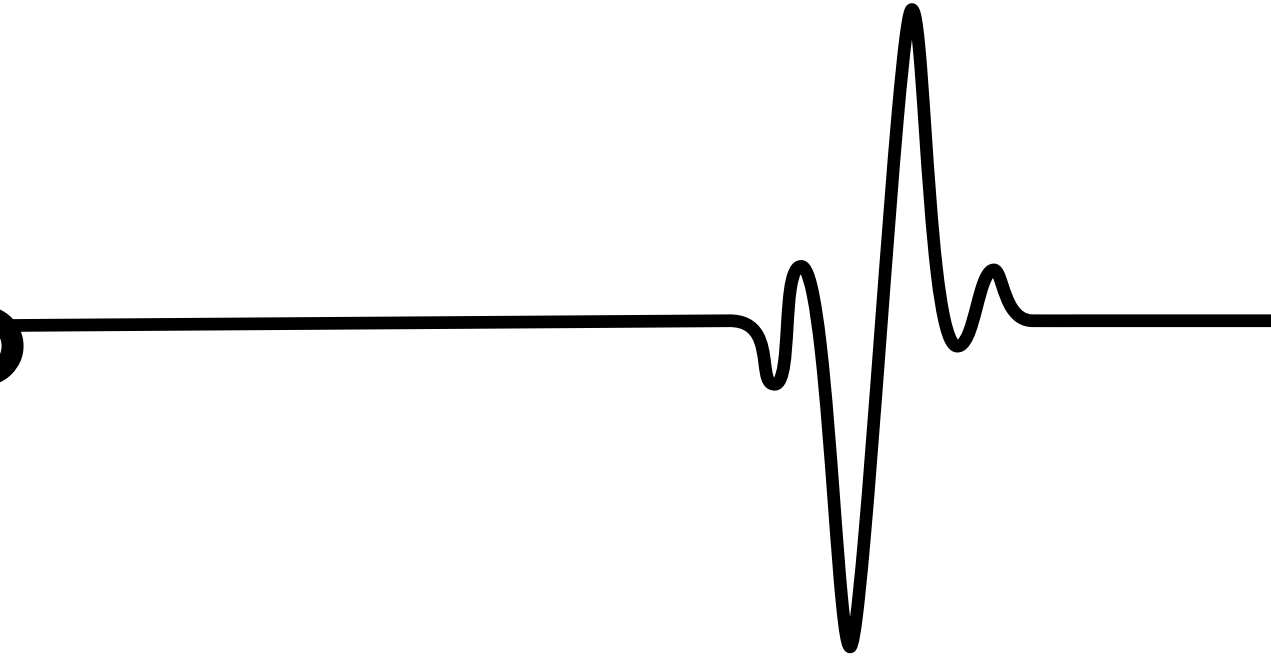
S

I

G

Z

portfolio



contents

1

technology

2

coworking / training space

3

coworking / serviced office

4

coworking / serviced office

5

residential apartment

DELL TECHNOLOGIES

PROJECT NAME; DELL EXPERIENCE CENTRE

LOCATION; LAGOS, NIGERIA

SIZE; 45SQM

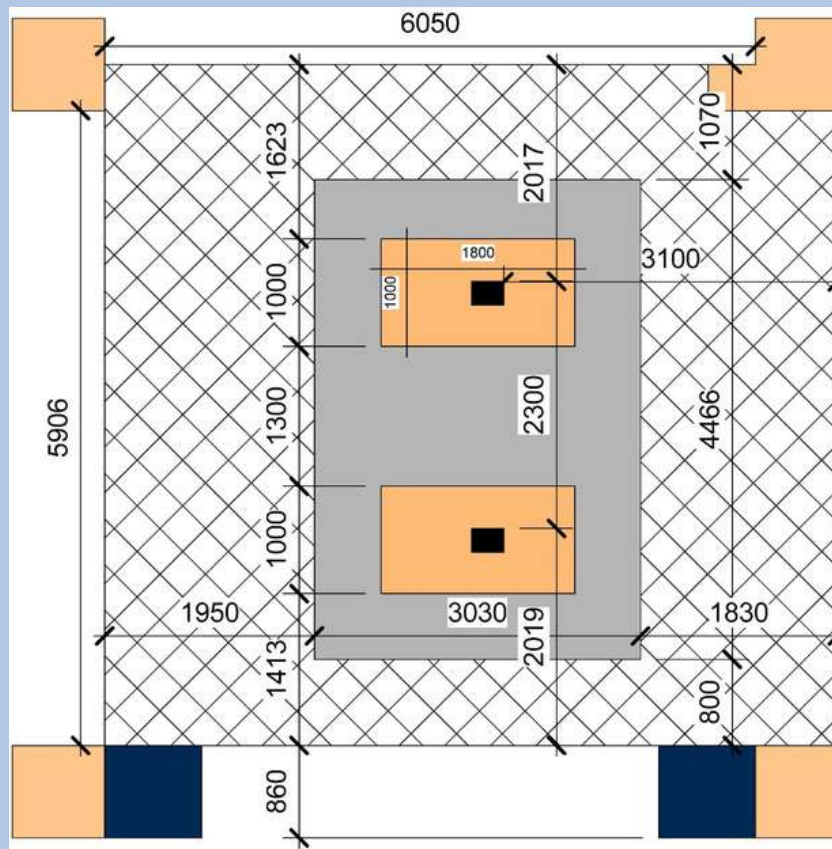
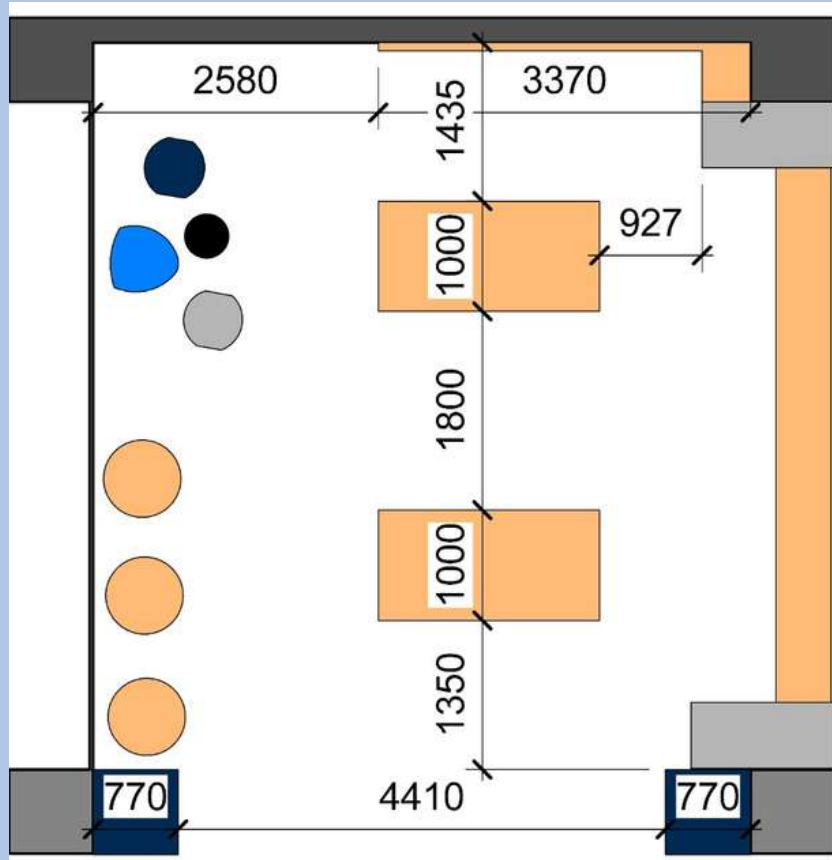
We were challenged to design and build the Dell Technologies Customer Experience Center situated in Lagos, Nigeria. The Dell experience centre, is the first of its kind in Nigeria.

Designing and building this space was interesting. The major challenges were the timeline for project completion (vis a vis Covid19 pandemic), the total SQM of the given space in relation to the products to be displayed and other competitor OEMs which also had to have their space designed and built.

In order to create a sustainable and outstanding design, ideas from case studies of other existing experience centers, study of the brand guidelines, sourcing locally made materials and custom building all furniture pieces, were all merged to create the final design and space.



Approved floor plans , layouts and 3D drawings, showing furniture arrangement and circulation spacing between bespoke furniture





Before and During the project

Project timeline; 6 weeks. against the estimated 4 weeks. Delay caused by covid19 preventive measures.

Meeting the market demands

This Built to Suit solution meets the demands of an increasing market with a huge appetite for high tech devices by providing a fully fitted experience center where individuals and companies can use and feel all tech devices they are interested in purchase.



ONE INNOVATION HUB

PROJECT DESCRIPTION; COWORKING & TRAINING SPACE
LOCATION; KWARA STATE, NIGERIA
SIZE; 120SQM

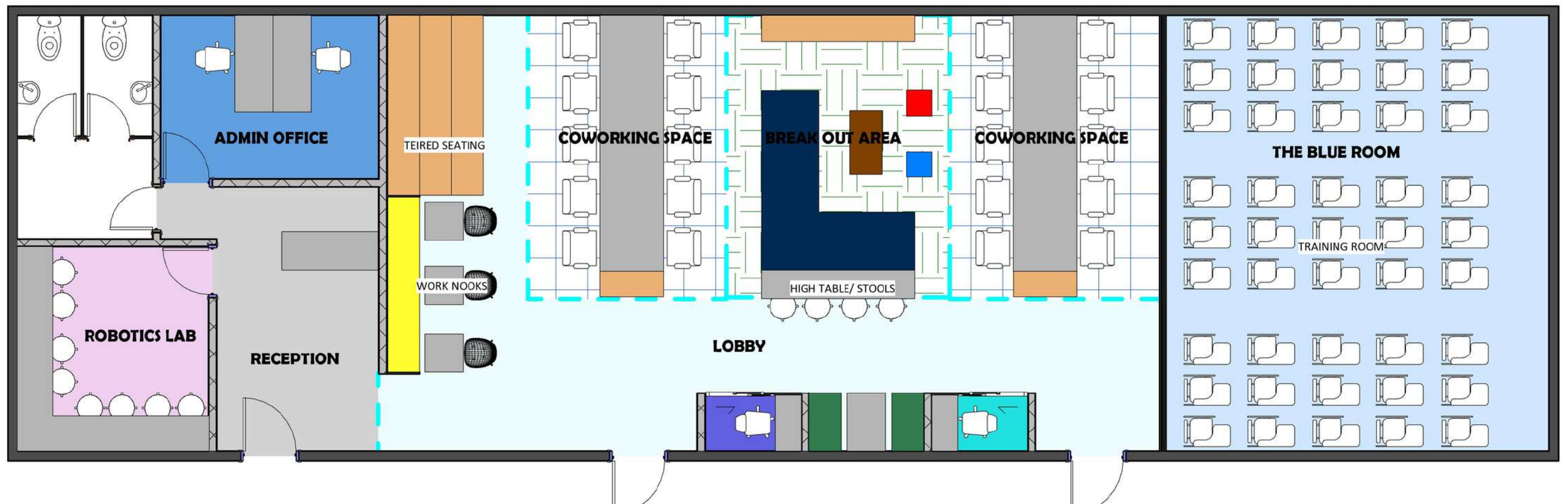
The office of the local council in Offa, Kwara state, approached our team to design a cowork and training space, using a pre-existing container structure located in the Offa industrial layout.

Taking into consideration that this was community project, we developed a design solution guided by their brief, that would integrate into the industrial layout and locality while staying true to community's mission and vision. In collaboration, we examined the existing container building and proposed a solution that would maximise its efficiency as a coworking and training facility while supporting the Innovation hub's business model.

Research into history of the area informed our decision to introduce design concepts through the use of rattan, bright colors, peacock feather designs and a furniture selection that references the culture of the people thereby giving this coworking space its own unique design identity.



Approved floor plans, and layout showing furniture arrangement and circulation spacing between bespoke furniture

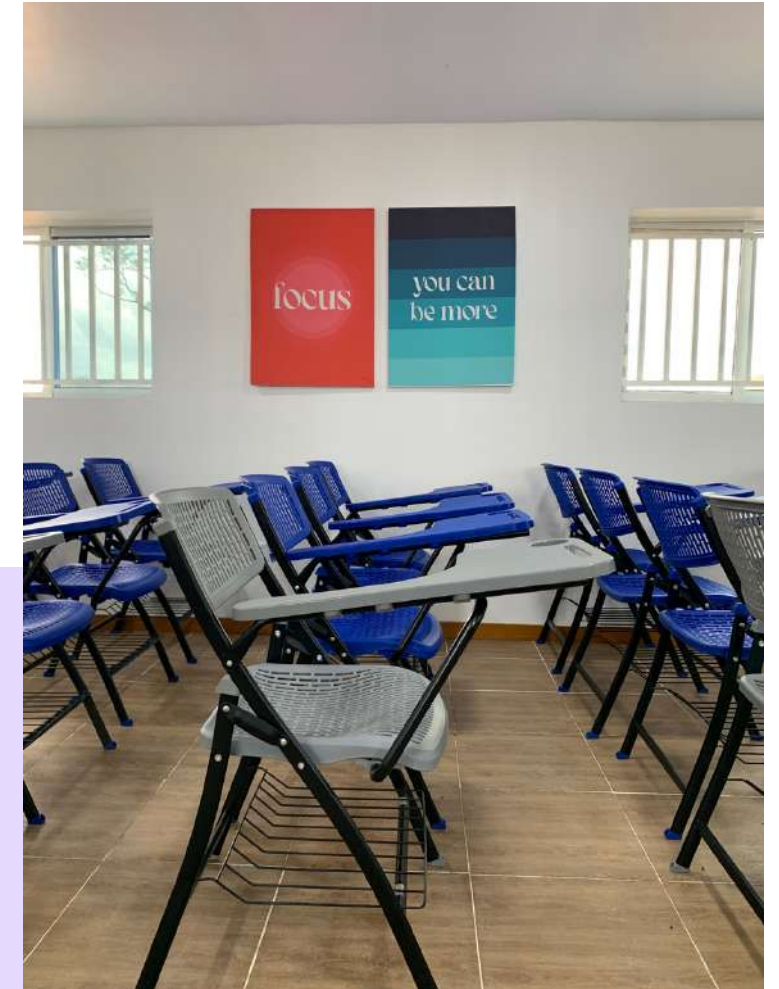




Before and During the project

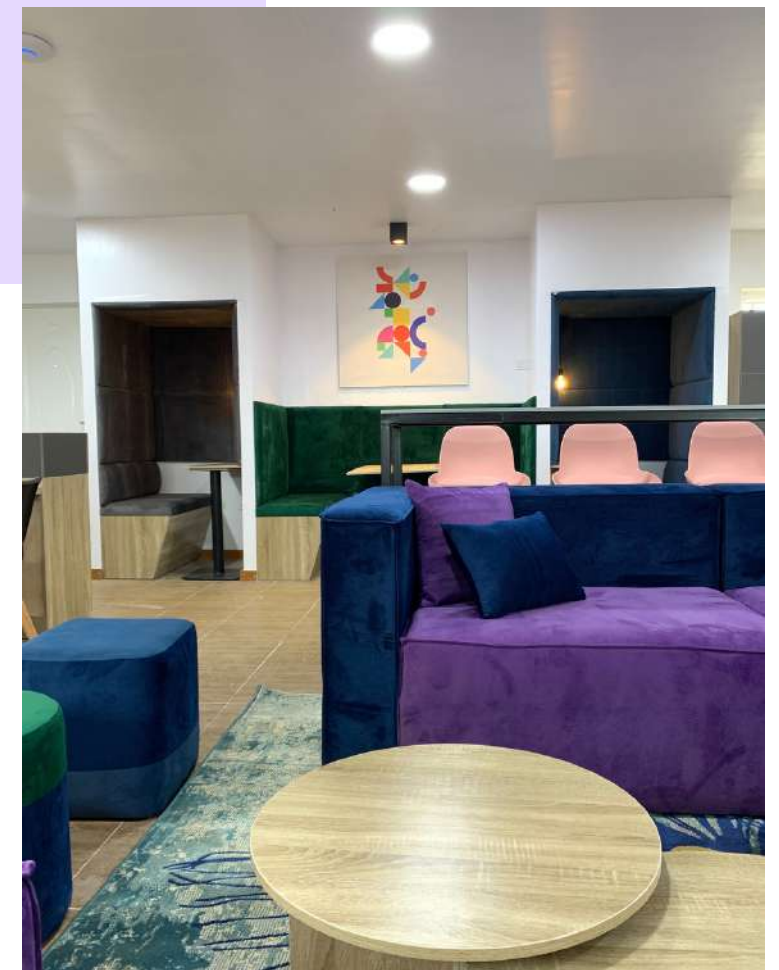
Project timeline; 3 weeks

All items were designed and made to specification.



Transformed

The final fit-out is designed to suit a range of sectors and potential users, supporting the Innovation hub's flexible work model. With a neutral palette accentuated by modern accent tones, the coworking space is perfect for modern businesses and trainings,



VATEBRA TECH HUB

PROJECT DESCRIPTION; COWORKING & TRAINING SPACE

LOCATION; LAGOS, NIGERIA

SIZE; 350SQM

Vatebra Limited is committed to providing inspiring, yet affordable workspace in Lagos,. They desginted my team and I to fit out their first ever tech hub location in Ajah, Lagos, an area with an increasing need for a cowork spaces and tech trainings.

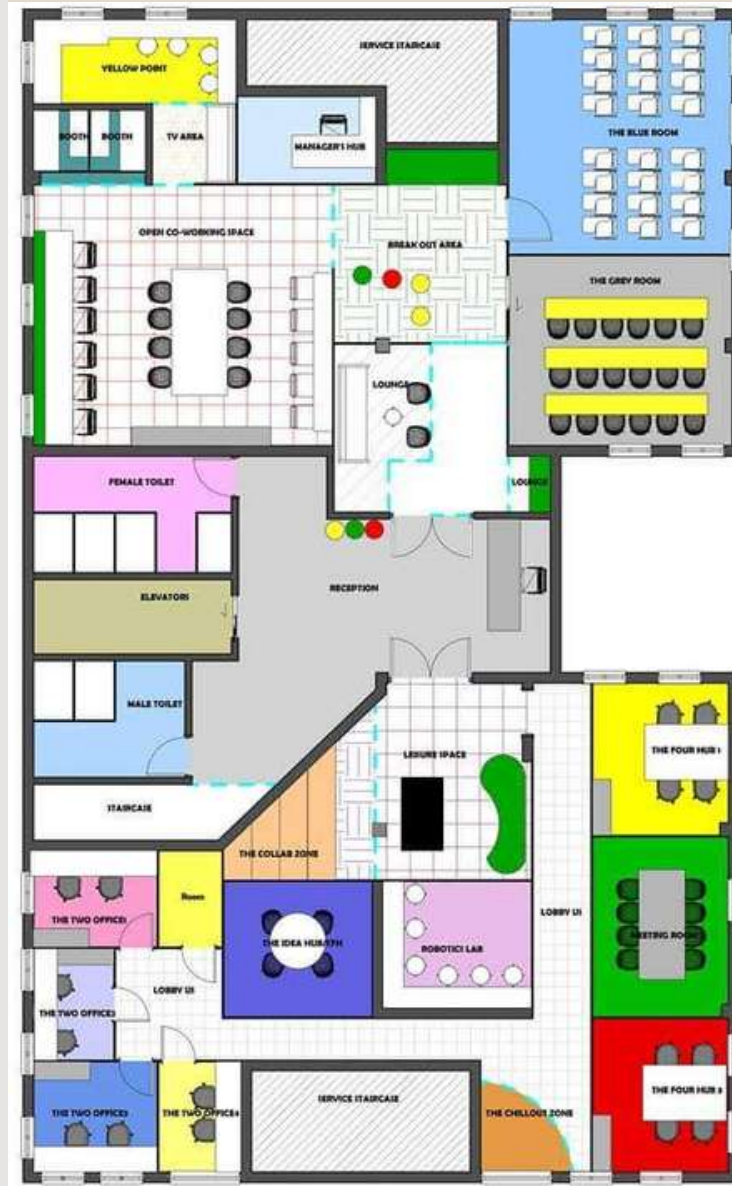
The Vatebra Tech hub began with the sole aim of setting up workspaces that are affordable for creatives, and since then they have opened five locations, spread across Nigeria.



Envisioned

Our team developed a design guided by the approved brief, resulting in a two-winged design consisting of private and open-plan coworking spaces.

The design model divides the entire floor into two units that can accommodate creatives as well as companies and enterprising individuals, thereby creating a multifaceted community that encourages a symbiotic relationship between the users. The space further offers its users access to trainings, mentorships and fundings.



Sustainability

Sustainable design and was a key focus in the during the design phase. The carbon footprint of the project was greatly reduced by reintegrating and rehabilitating the existing building fabric which includes the floors, all block walls, electrical cables and some ceiling. Also, materials and products specified were sourced and fabricated locally.

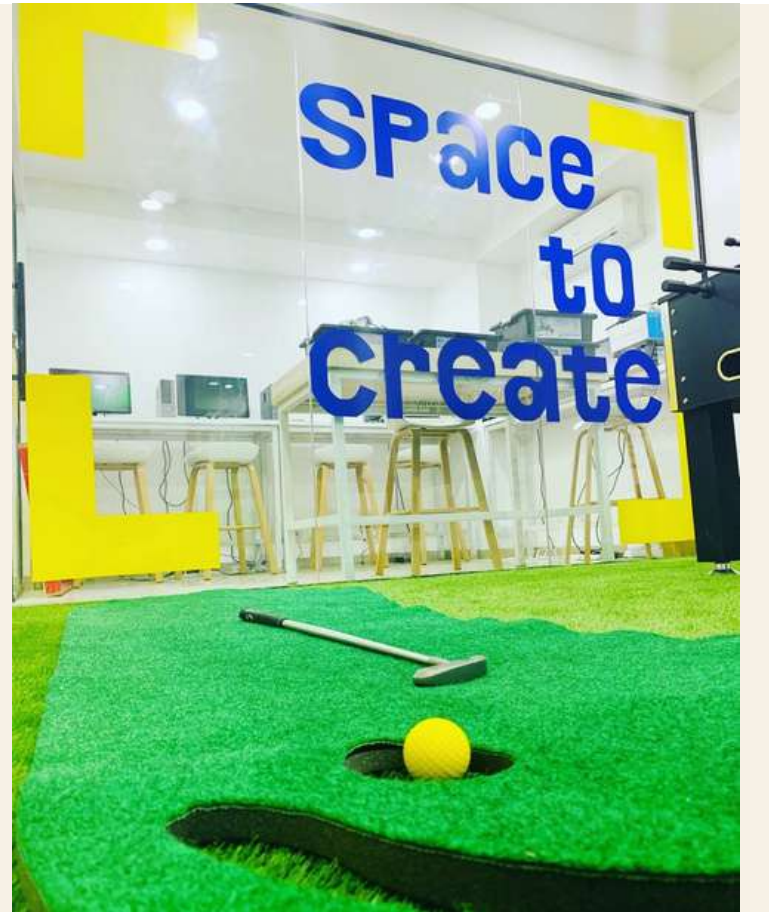
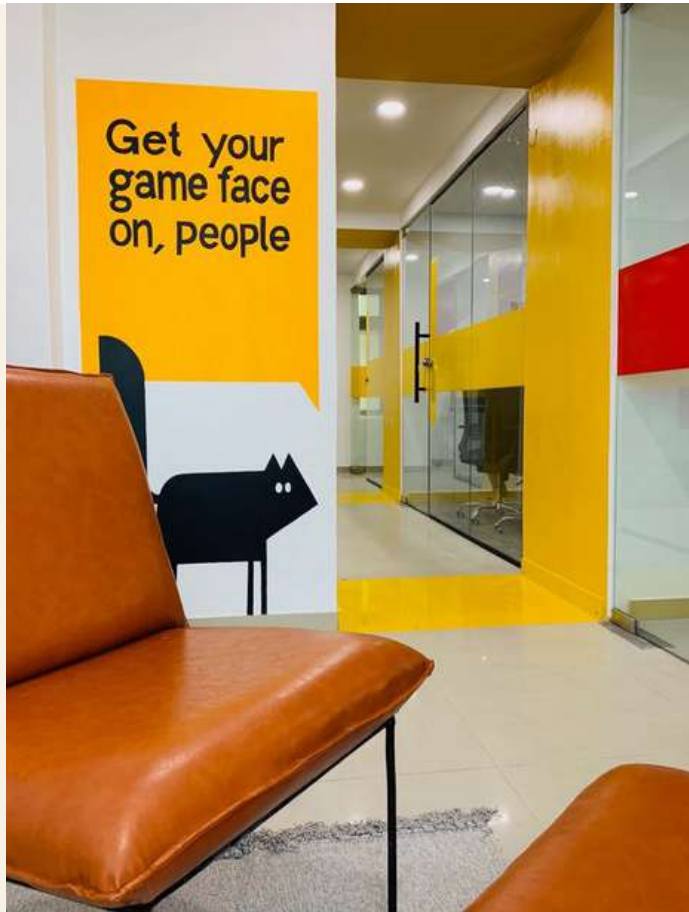


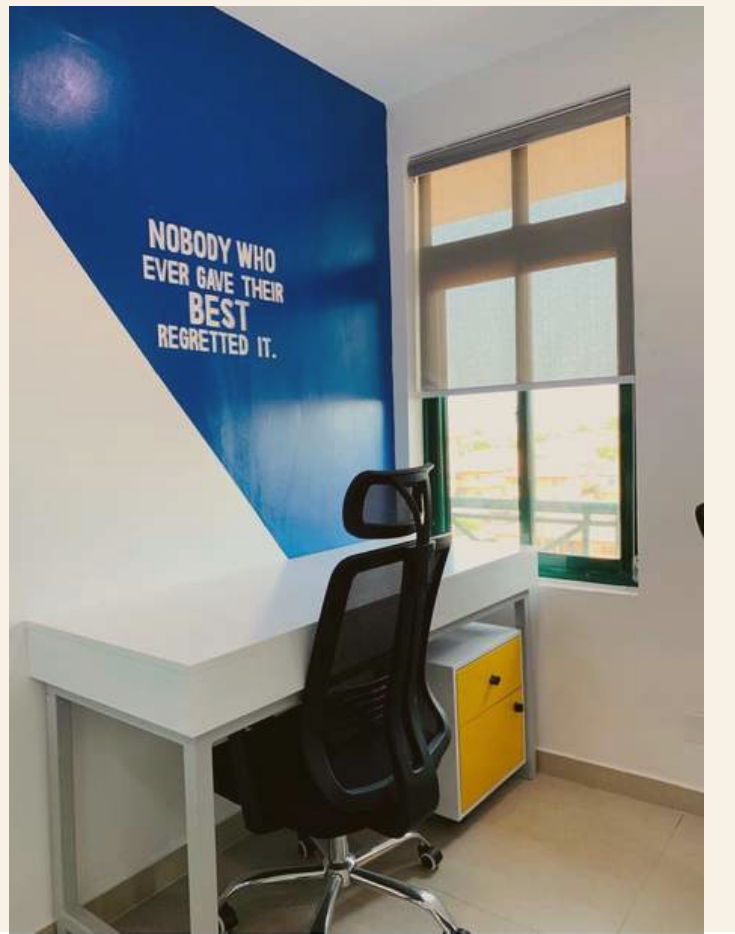
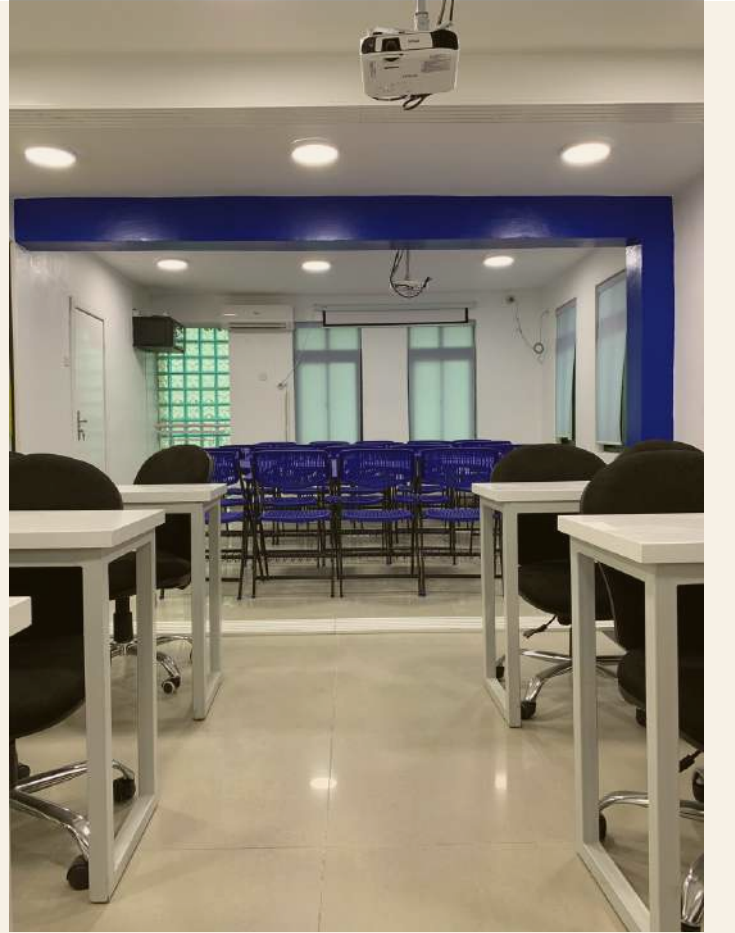


Transformed

The Vatebra Tech Hub, a space bursting with key colours is a welcoming people-centric space that supports agile working and offers flexibility for the future. The workspace is designed to enhance creativity, adorned with indoor plants, vibrant artworks and feature lighting.

The open plan area was designed to become an agile workspace that would encourage interaction between individuals from various industries, and teams, leading to a cohesive workplace culture.





BAYELSA TECH HUB, BANK OF INDUSTRY

PROJECT DESCRIPTION; COWORKING & SERVICED OFFICE
LOCATION; LAGOS, NIGERIA
SIZE; 427SQM

Envisioned

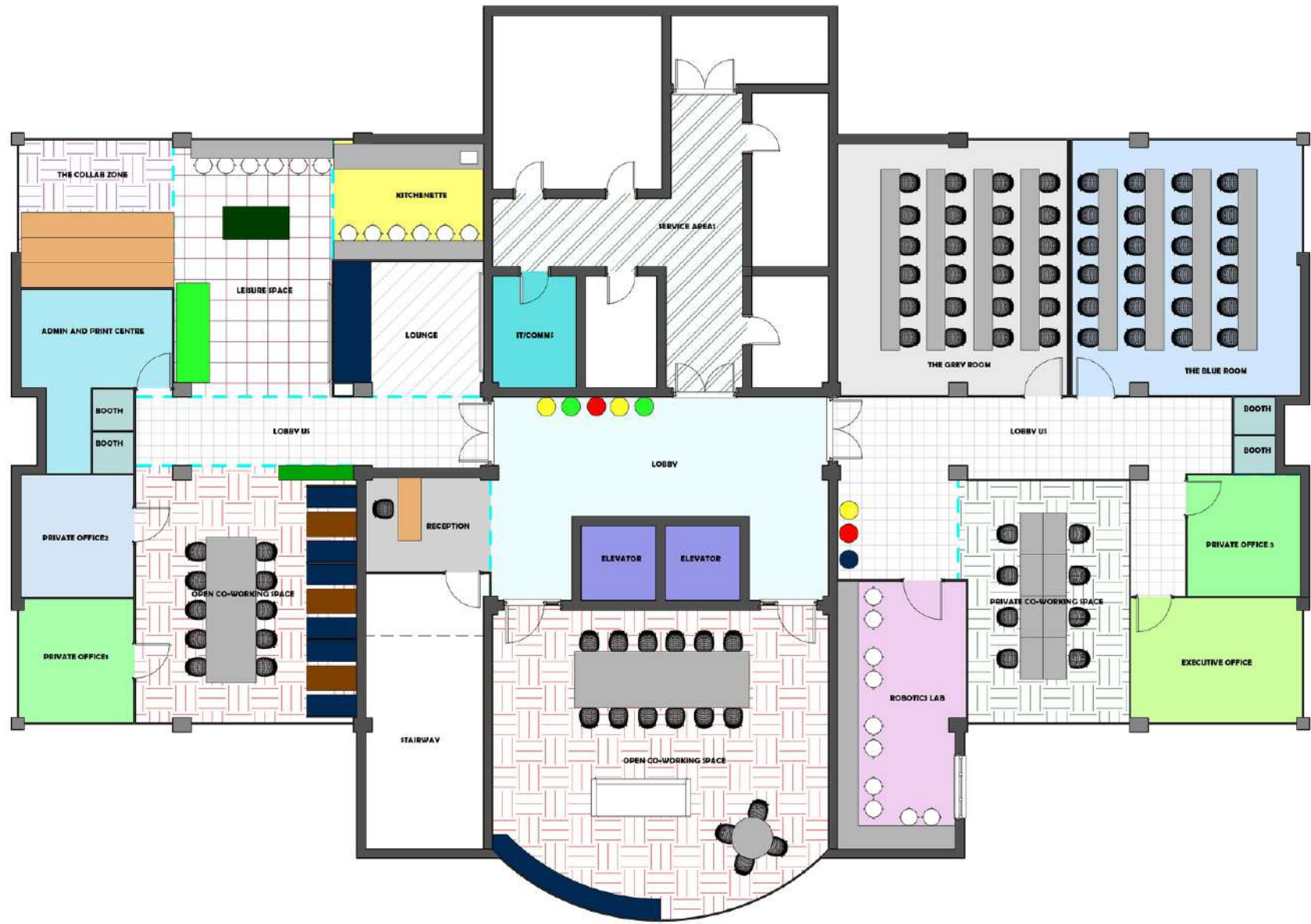
We were challenged to create a space that aligned with Bank of Industry's mission in 6 weeks, whilst designing a space that suites the existing architecture of the building.

the goal was to deliver a mixed use space where people can work individually, as a team, collaborate and also have private conversations.

From the partitioned offices to the moveable offices, collaborative breakout areas and kitchen, the space has undoubtedly excelled in providing working environments to suit a variety of personality types.



Floor plan layout, Before and During the project





Transformed

To enable hot desking, collaboration spaces, open plan desks, phone booths, a chill zone, and lockers were integrated in the design.

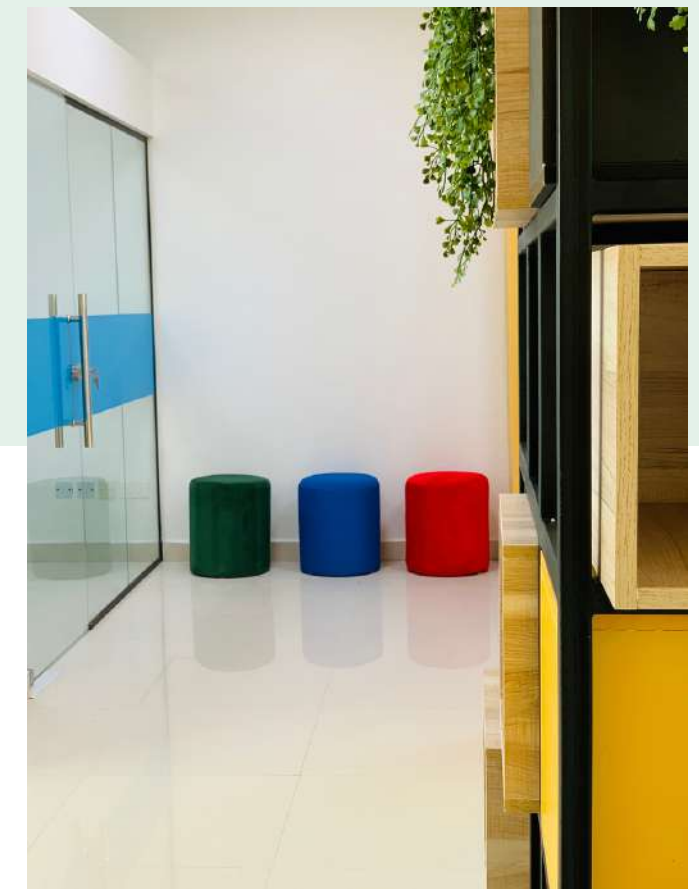
To ensure a wholesome work experience, the plug and play workstations, spacious workspace, soft seating and playful yet calming feel of the common areas offer the benefits of comfort that users experience when working from home.

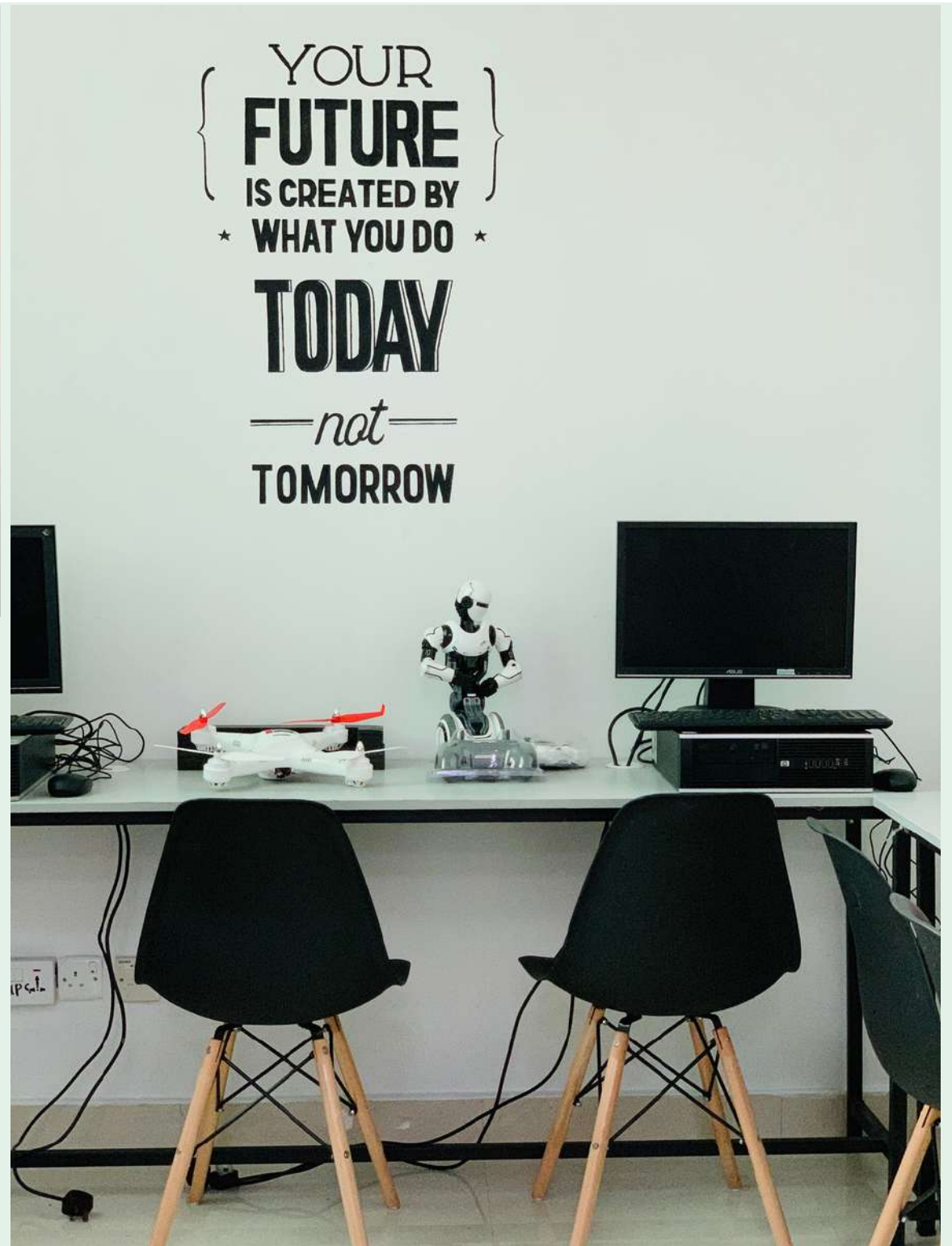
There is a variety of cellular office spaces, personalized work desks and open plan areas. Sliding partitions were custom made to allow for future sustainable adaptations and enable workplace agility. In addition, a dedicated space for robotics training has been created to encourage robotics technology for the young and old minds.



The final workspace is fully flexible; allowing it to evolve and adapt to suit the changing needs of users.

The interior decoration includes, wall murals, inspirational quotes, biophilia, natural colored wood finishes and a modern colourful palette designed to appeal to all users and further promote occupant wellbeing.





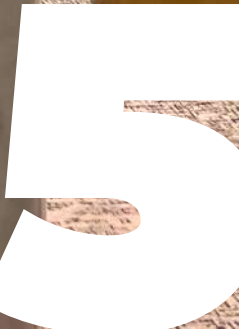
FH11 RESIDENTIAL PROJECT

PROJECT DESCRIPTION; RESIDENTIAL APARTMENT
LOCATION; LAGOS, NIGERIA
SIZE; 3 BEDROOMS, 1 LIVING ROOM & DINING,

Envisioned

We designed a Contemporary design that embodies the spirit of the age by blending a neutral palette with a touch of luxury to minimalist elements, and organic silhouettes. The final outlook is impacted by current trends in lifestyle, art culture and interior design.

The introduction of bold pops of color, gold metallic accents, statement light fixtures, and striking abstract artwork works, were used together to infuse personality into each space in the apartment.





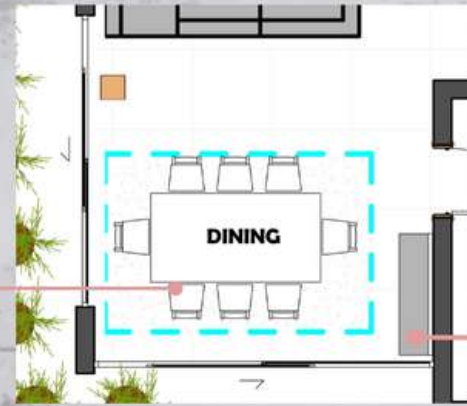
Approved layout and moodboard highlighting all statement pieces to be used in the space to transform into a home.



The finished living room is a majorly light grey toned warm contemporary yet eclectic space with a touch of luxury.



DINING



Pendant lights hanging above dining table design in high gloss wood with gold inlays and edge trimmings, Dining Chairs in grey tones

dining space layout

Abstract art painting above Buffet sideboard

Approved layout and moodboard highlighting all statement peices to be used in the space to transform into a home.



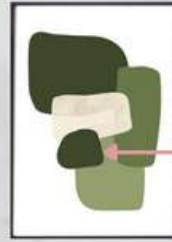
Sometimes, the boundaries of design has to be broken. Elements from various styles have been incorporated in this style to create a new design.



MASTER BEDROOM



study/dressing nook + TV console



master bedroom layout



Grey low headboard with large abstract over bed. end bench



outdoor furniture and plants



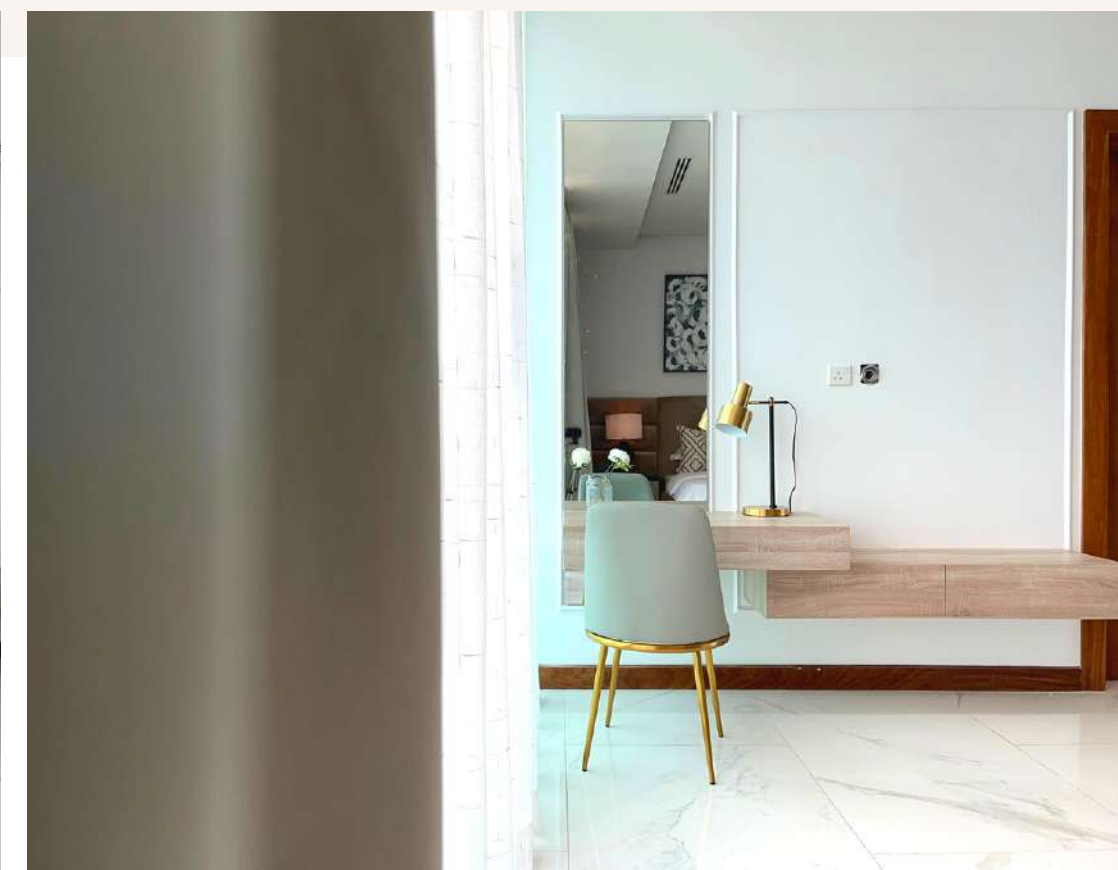
reading couch

Approved layout and moodboard highlighting all statement pieces to be used in the space to transform into a home.



“Styles come and go. Good design is a language, not a style.”

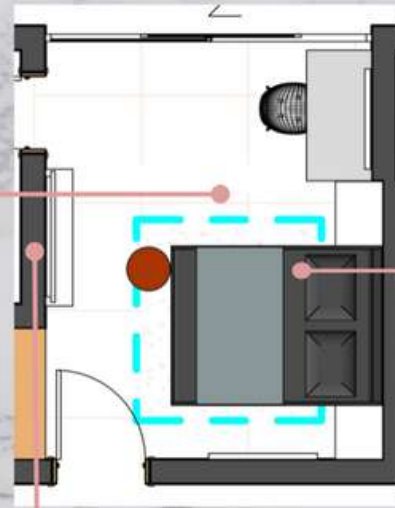
- Massimo Vignelli



B E D R O O M 1



study corner



bedroom 1 layout

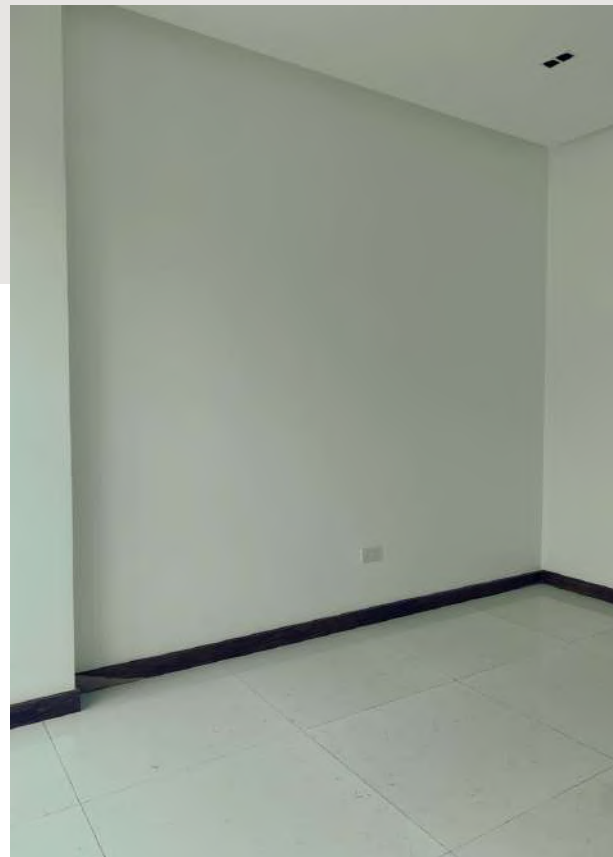


floating tv console



Grey low headboard with abstract art over bed. brick red accent ottoman pouf and coral colored layered throw pillows, all seating on a natural colored patterned nautical rug.

Approved layout and moodboard highlighting all statement pieces to be used in the space to transform into a home.



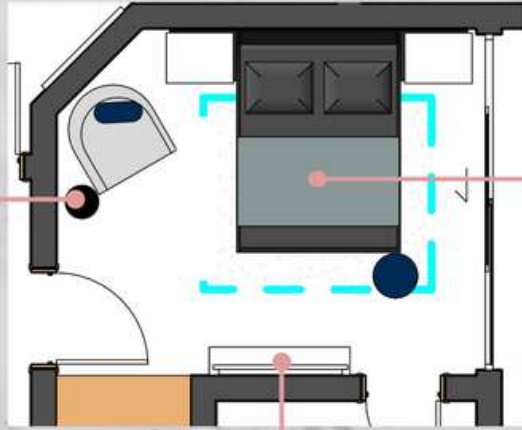
Coral, Grey and Brown accents are infused in this bedroom to give it a modern yet Scandinavian design.



BEDROOM 2



bedroom layout



accent couch

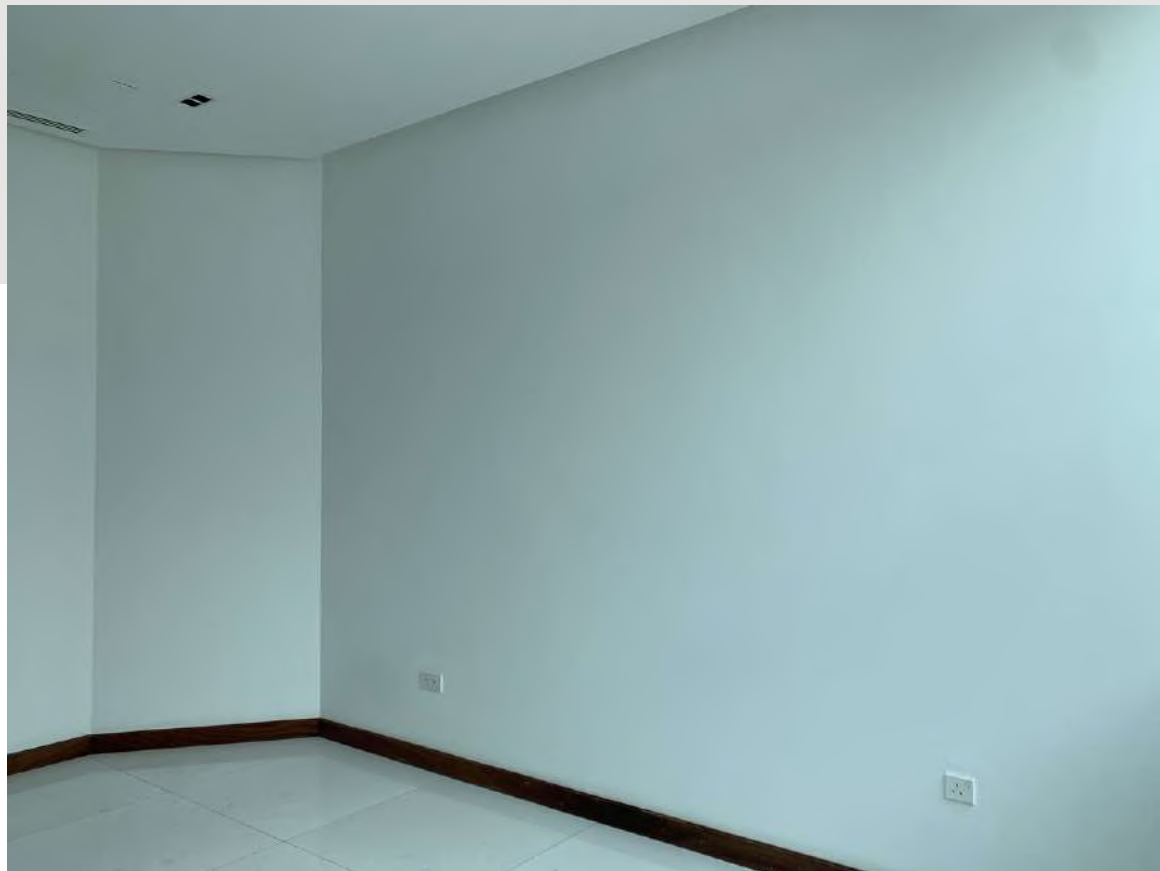


floating tv console



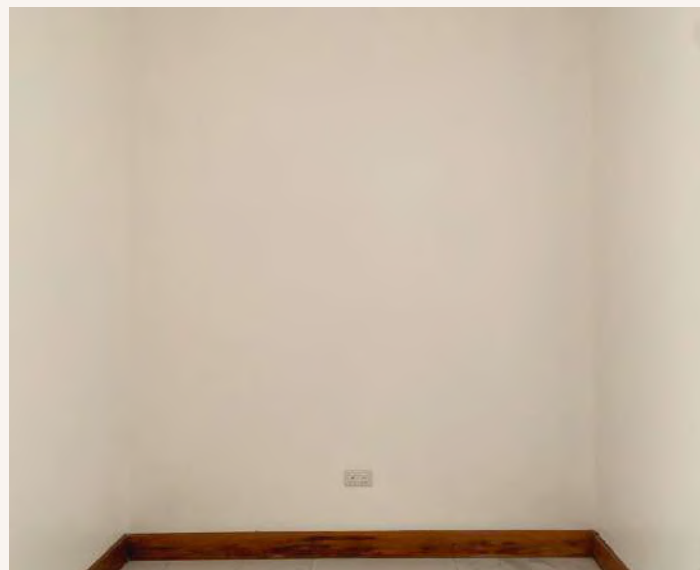
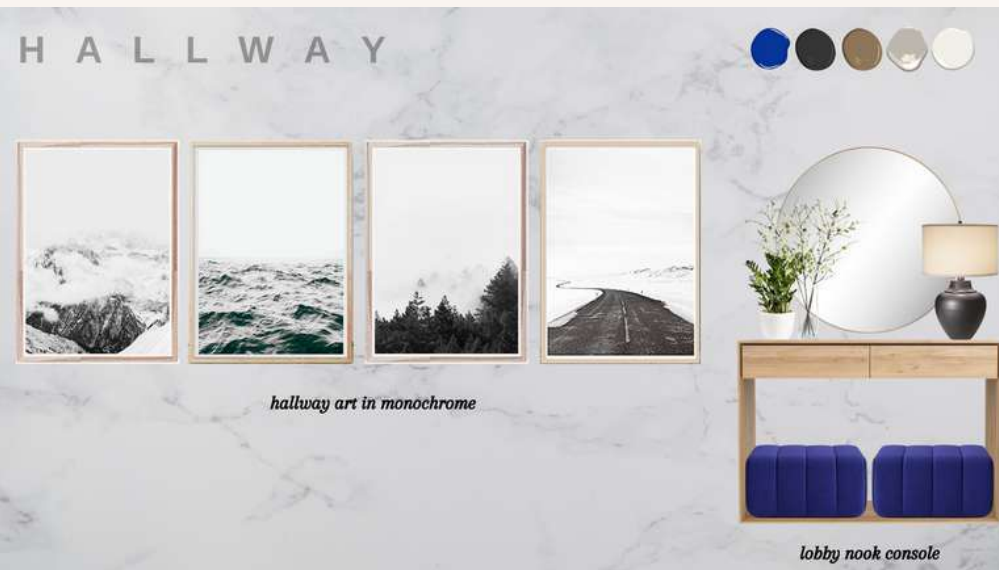
Low grey headboard with abstract over bed. navy blue accent ottoman pouf and layered throw pillows, all above patterned rug.

Approved layout and moodboard highlighting all statement pieces to be used in the space to transform into a home.



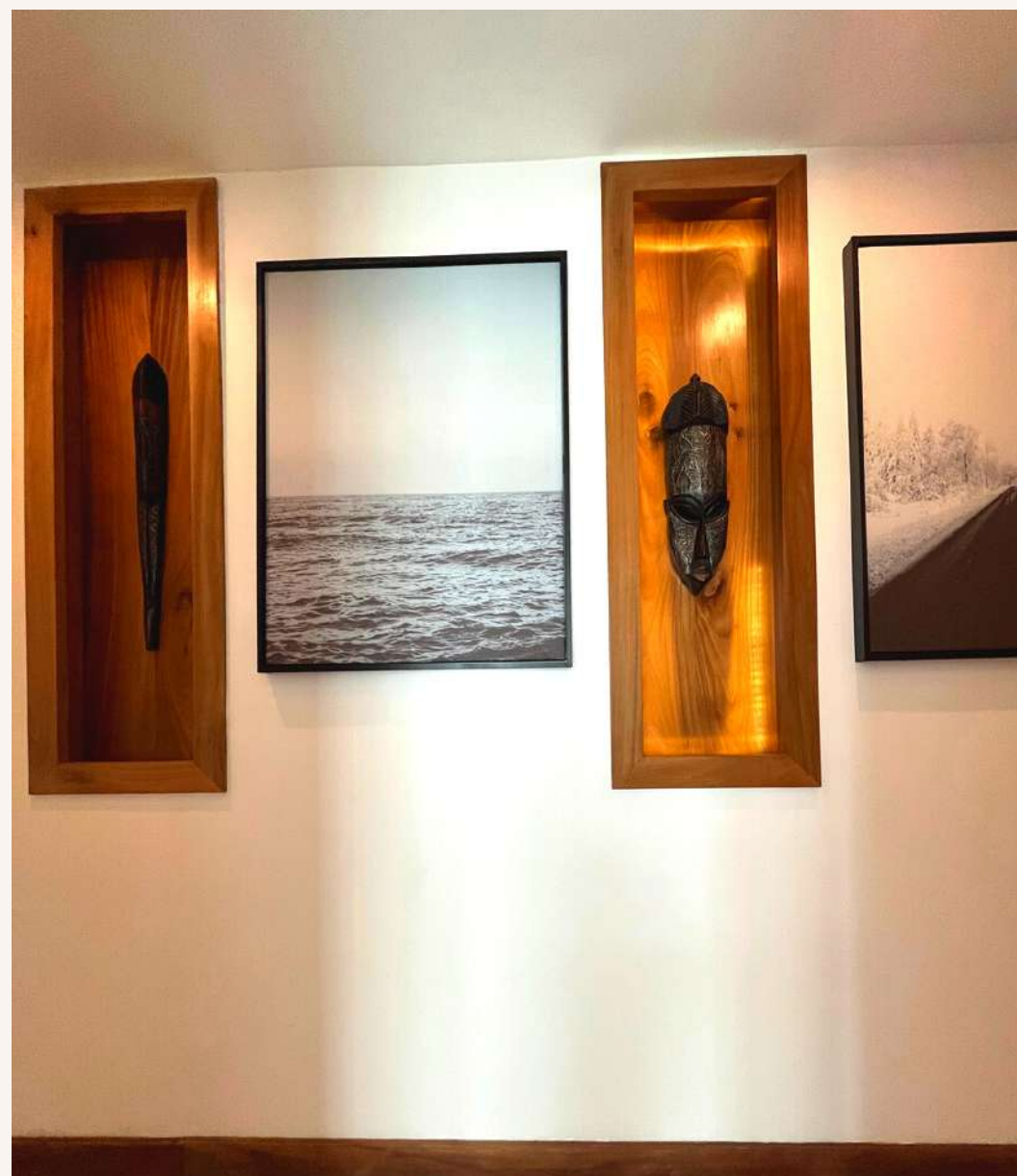
A touch of red in this calming modern bedroom. Large and small sized abstract arts define the walls of this room.





The hallway was designed like an art gallery, featuring statement ethnical carved masks from various ethnic groups in Nigeria and landscape monochrome photographs.

The console area also features a large statement mirror and nordic console. All locally sourced and custom produced.





Biophilic terrace design with local hand crafted rattan and wood furniture.



ebengeobong.eyibo@gmail.com

